



HE MAURI OHOOHO

Strategy Refresh 2018-2020

Connecting and navigating regional development to build stronger communities and whānau in the wider Bay of Plenty

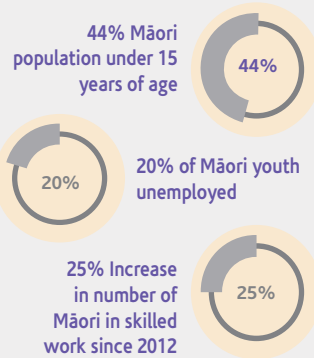
He Mauri Ohooho is New Zealand's first regionally coordinated Māori Economic Development Strategy.

He Mauri Ohooho was developed under the Bay of Connections framework in partnership with the Ministry for Māori Development's Te Puni Kōkiri - established to harness the collective talents of Māori to produce a stronger New Zealand.

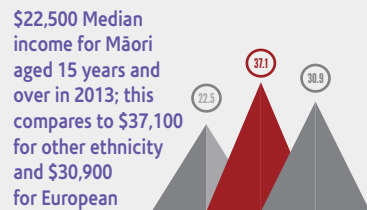
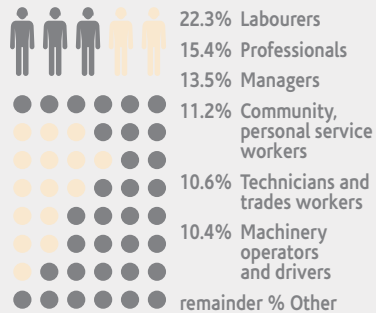
PROPORTION OF NZ ASSET CLASSES OWNED BY MĀORI



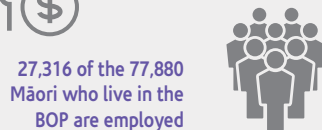
WE'RE HERE:



MĀORI IN WORK - SECTORS WHERE MĀORI ARE EMPLOYED IN BOP



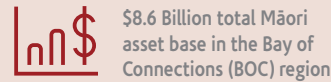
Māori earn \$116 per week less than non-Māori



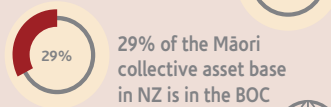
OPPORTUNITY:

Māori Economic Development is dynamic

MĀORI ASSET BASE



11% Māori contribute to the GDP in the BOC



685,000 (approx) hectares of Māori land (31% of the region) in the BOC



Over 35 Iwi, over 230 Hapū, approx. 163 Marae in the wider region

1800 Māori Land Trusts

MĀORI BUSINESS NETWORK



Jobs in a range of sectors are expected to grow across the BOP, especially in skilled areas



OUR APPROACH

NAVIGATING AND CONNECTING



Iwi, Industry and Government

COLLABORATION



Working together to make a difference

CO-OPERATIVE CAPITAL



Facilitating investment to realise potential

INVESTING IN OUR YOUTH



ACTIVELY SUPPORTING BOC



Delivering on the Bay of Plenty's Regional Growth Programme



WHERE WE NEED TO BE:

MĀORI LAND USE OPTIMISED



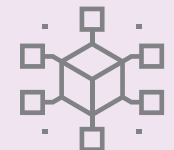
DEVELOP TALENT TO GOVERN, MANAGE AND THRIVE



MĀORI ARE INTO HIGHER SKILLED AND BETTER PAYING JOBS OR SELF-EMPLOYMENT



A THRIVING MĀORI BUSINESS NETWORK



MĀORI YOUTH EMPOWERED

