

Tōi Kai Raua

ACCELERATING MĀORI DEVELOPMENT
IN THE BAY OF PLENTY REGION

MĀORI STEAM STRATEGY

VISION

- That our people are navigating the world with precision and confidence realising our infinite potential.

PURPOSE

- To increase Māori STEAM (Science, Technology, Engineering, Arts, Mathematics) aspiration, participation, attainment and ability in which to contribute to a high-value economy in the wider Bay of Plenty.

GOALS

- To position Māori as the key partners to unlocking the future potential of Aotearoa New Zealand through STEAM.
- To facilitate strong partnerships that have long term benefits such as knowledge transmission to ensure whanau have opportunities across the value chain.
- To accelerate development in STEAM to create the leaders of tomorrow.

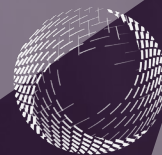


HE MAURI OHOOHO

HE DANGATAHI
HE ANAMATA



Our Youth. Our Future.



Priority One
Tauranga
Moana

FOMA
ME URU KAHIKATEA
INNOVATION

INTRODUCTION

This STEAM strategy repositions Māori as navigators in the evolving world of technology, innovation and commerce. Our tupuna (ancestors) were innovative, resourceful and brave and navigated the world with precision, confidence while exploring new opportunities in places yet to be discovered. At the centre of the plan is the importance of mātauranga Māori (knowledge) and its significant role as we move into the future.

The STEAM strategy is building on the strong rangatahi (youthful) demographic that will drive future growth around Aotearoa and the world. It seeks to activate opportunities across science, technology, engineering, arts and mathematics to mobilise Māori as navigators for their communities and whānau.

The Māori STEAM Strategy will be undertaken through nurturing collaborative relationships, connecting to what already works and creating solutions for the gaps, whilst providing focus and purpose through a coordinated plan of action. Sharing our experiences is crucial on this journey, in addition to doing this locally and nationally we will reach out to other indigenous nations globally.

OBJECTIVES

- To increase Māori STEAM participation in education, training and employment.
- To identify and establish purposeful relationships for collective impact with Māori, government, education providers, business and industry.
- To identify and connect to STEAM initiatives that can be fit-for-purpose for Māori.
- To identify the gaps, co-design and deploy prototypes that are scalable across the wider Bay of Plenty region.
- To build a coordinated approach to Māori STEAM initiatives, cadetships, internships, scholarships and programmes.
- To build our networks with indigenous nations, fostering opportunities for experiences abroad.

Toi Kai Raua

MĀORI ECONOMIC DEVELOPMENT

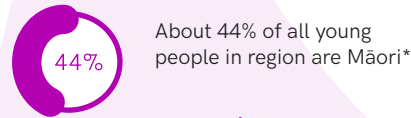
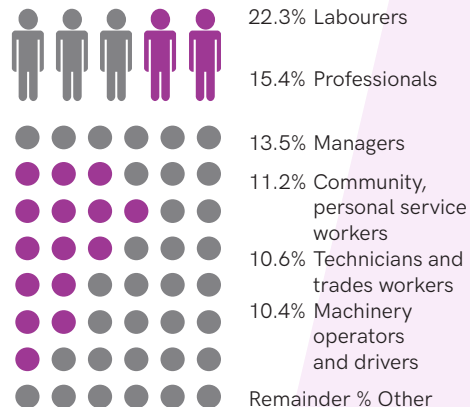
WE ARE HERE



Māori made up 4.6% of architects and engineers and 6.4% of physical science and engineering technicians in 2010*

Māori economy has primary industry bias and young population, a developing economy profile in a developed nation

Māori in work - Sectors where Māori are employed in BOP



- 158 + primary/ intermediate schools in the wider Bay of Plenty region.
- 29 + secondary schools in the wider Bay of Plenty region.
- Approx. 42% of all the secondary school aged population are Māori.



- 8.6% unemployment rate of Māori in NZ compared with 4.2% of non-Māori*
- Pockets of deprivation in Māori communities across the wider Bay of Plenty region.



Bay of Plenty region - 3rd largest Māori population in the country*

WHERE THE OPPORTUNITY IS



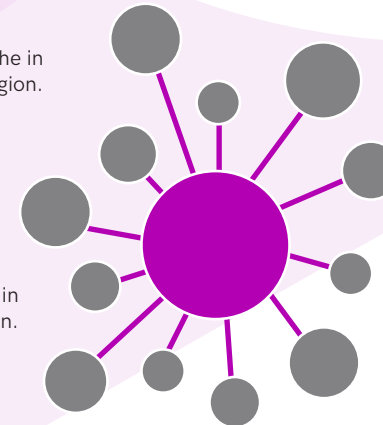
Approx. 1/3 of the Māori economy sits within the wider Bay of Plenty region

- > 40,000 new jobs predicted in the wider BOP by 2050, mainly in high skilled areas
- By 2030, Māori, Pacifica, Asians will make up 30% of the working age population and is expected to increase to 50% by 2050*



Dynamic Mid-market sector in the wider Bay of Plenty region.

Growing Māori business sector in the wider Bay of Plenty region.



Strong innovation investment eco-system in the wider Bay of Plenty region.

Strong science, research, and innovation eco-system in the wider Bay of Plenty region.

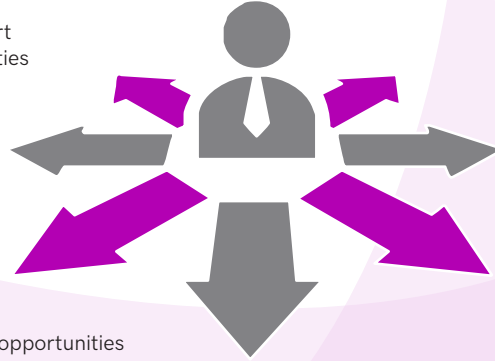
*Statistics NZ, Census data - 2013
 *IPENZ (2010), Minority Groups in engineering education: Wellington: Institute of Professional Engineers. http://www.ipenz/education_career/report_minority_groups_in_engineering.pdf
 **Workman, W (2019) Panui Māori Policy Commentary - Quarterly Review for the period 1 April to 28 June 2019
 *Schulze, H, Leung-Wai J, Stuart S, Hudson, M (2014) He Mauri Ohooho Māori economic strategy

WHERE WE NEED TO BE

Māori have access to opportunities that support them to accelerate into higher value opportunities leading to higher standard of living.

Strong collaborations & partnerships with sectors/ Industries and Māori organisations to deliver meaningful outcomes for Māori.

Māori can connect and engage with the opportunities in their region.



MĀORI STEAM

- Increased Māori participation in STEAM educational pathways leading to more higher value opportunities.
- Increased Māori STEAM graduates leading to more Māori STEAM academics.
- 29 + secondary schools in the wider BOP are supported.

- Māori employment above and beyond the living wage .
- Increased value of the Arts in the wider Bay of Plenty region.

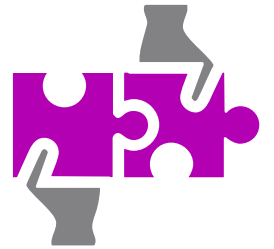


WHAT WE NEED TO DO TO GET THERE



Be focused and have a plan!

- Develop innovative solutions to fill the gaps.
- Build meaningful pipelines into high value industries in the wider Bay of Plenty region.



- Connect to what works.
- Collaboration - Work Together for a common goal.
- Connect industry to a strong pool of talented Māori workforce.

- Spark aspiration and awareness of STEAM opportunities.
- Engage in developing and building STEAM capability.
- Increase the number of Māori in STEAM.

MĀORI STEAM

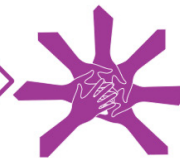
OUR STRATEGIC THEMES, OBJECTIVES AND ACTIONS 2019 - 2022

<p>COLLABORATE BUILDING PARTNERSHIPS</p>	<p>To identify and establish purposeful relationships for collective impact with Māori, government, education providers, business and industry.</p>	<p>Partner with secondary schools in the wider BOP Y1 50% TO Y3 80%</p>	<p>Partner with leading tertiary providers in the wider BOP</p>	<p>Partner with leading industry players in the wider BOP Y1-15 to Y3-50</p>
<p>CONNECT TO WHAT WORKS</p>	<p>To identify and connect to STEAM initiatives that can be fit-for-purpose for Māori.</p>	<p>Complete comprehensive scan of initiatives regionally and nationally in 2019</p>	<p>Establish Māori focused Code Clubs and Electric Gardens Starting in 2019</p>	<p>Support the delivery of STEAM related academy's in the wider BOP starting in 2020 Annual Māori STEAM Careers expo Starting in 2020</p>
<p>CREATE DESIGN TO THE GAPS</p>	<p>To identify the gaps, co-design and deploy prototypes that are scalable across the wider BOP.</p>	<p>Annual Māori Youth Leadership Summit that moves across the wider BOP</p>	<p>Annual Ko Maui Hangarau Innovation Summit</p>	<p>Quarterly STEAM Discovery Tours Mentoring programme that is fit-for-purpose Y1-50, Y2-100 Y 3-150 mentors</p>
<p>COORDINATE HUB FOR CADETSHIPS, INTERSHIPS & SCHOLARSHIPS</p>	<p>To build a coordinated approach to Māori STEAM initiatives, cadetships, internships, scholarships and programmes.</p>	<p>STEAM Cadetships Y1-10 to Y3-50</p>	<p>STEAM Internships Y1-10 to Y3-50</p>	<p>STEAM Scholarships Y1-10 to Y3-50 STEAM School holiday Programmes Design in 2019, deploy in 2020</p>
<p>REACH OUT INTERNATIONAL INDIGENOUS OPPORTUNITIES</p>	<p>To build our networks with indigenous nations, fostering opportunities for experiences abroad.</p>	<p>Sharing indigenous experiences</p>	<p>Showcasing the use of ancient knowledge for innovation</p>	<p>Develop "Solutions Lab" using indigenous knowledge as the foundation</p>

MĀORI STEAM STRATEGY TARGET AUDIENCE

EDUCATION SECTOR

- Secondary schools in the wider Bay of Plenty (WBOP, Rotorua, Taupo, EBOP).
- Leading Tertiary Providers who are passionate about accelerating Māori development.



INDUSTRY

Organisations who are passionate about accelerating Māori development.

GOVERNMENT

Agencies who are passionate about accelerating Māori development.

INDIGENOUS NATIONS

Our indigenous relations who are interested in building relationships and future collaborations.

MĀORI

- Māori across all sectors who are passionate about Māori development.

CONTACT INFORMATION

PHYSICAL ADDRESS

c/o 29 Grey Street, Ground Floor
Tauranga

EMAIL ADDRESS

info@toikairawa.co.nz

PHONE NUMBER

(021) 143 7040



WEBSITE
www.toikairawa.co.nz



FACEBOOK
Toi Kai Rawa



TWITTER
Toi Kai Rawa
COMING SOON



INSTAGRAM
Toi Kai Rawa
COMING SOON

